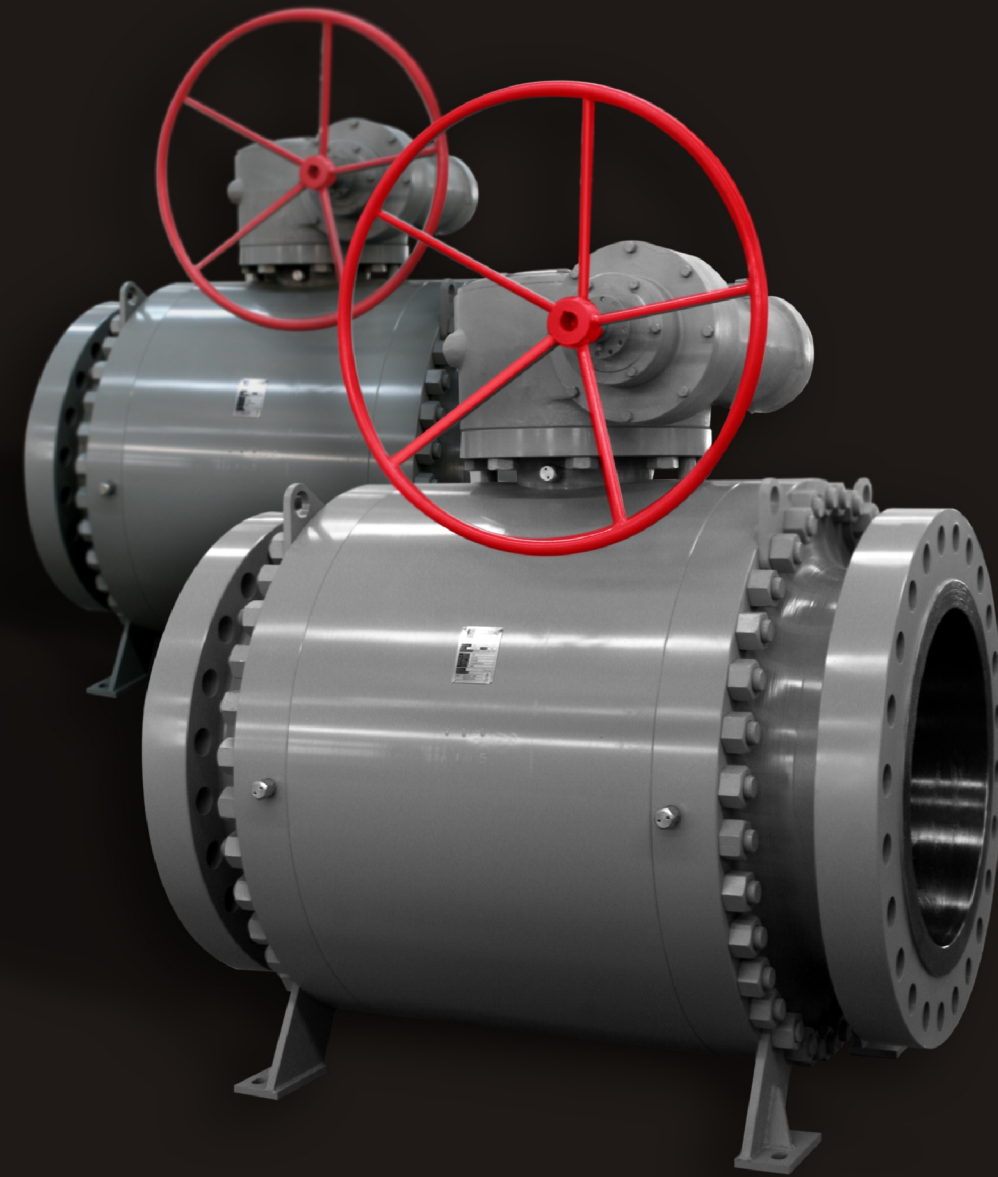


Lete
SUZHOU LETE VALVE CO.,LTD.



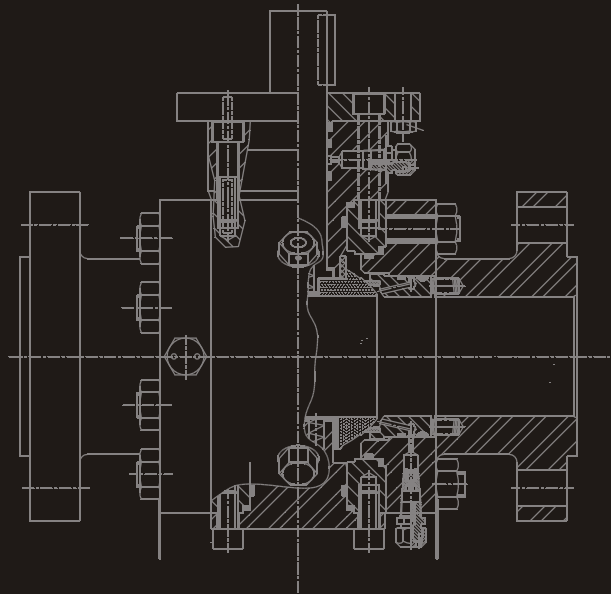
Lete

SUZHOU LETE VALVE CO.,LTD.
Add: Dongtaihu Road Puzhuang Town,Wuzhong District,Suzhou 215105,China
Tel: 86-512-66520621 Fax: 86-512-66535998 Mail: nihp@lete.szbnet.com

Lete

TABLE OF CONTENTS

Introduction.....	1
S Series Trunnion Ball Valve.....	2
S Series Trunnion Ball Valve Main Features.....	3
S Series Component Parts.....	5
S Series Dimensions and Weights ANSI Class 150.....	7
S Series Dimensions and Weights ANSI Class 300.....	8
S Series Dimensions and Weights ANSI Class 600.....	9
S Series Dimensions and Weights ANSI Class 900.....	10
S Series Dimensions and Weights ANSI Class 1500.....	11
TOP MOUNTING DIMENSIONS AND STEM TORQUE	12
S Series Pressure Temperature Chart	13
S Series Specification for Flow Coefficient.....	14
Material Specification.....	15
How to Order.....	17



SUZHOU LETE VALVE CO.,LTD.

Is a company specializing in the design and production of ball valves according to the specifications of API,ASME,ANSI,ASTM,MSS,DIN,BS,JIS,NACE etc.

The company management is composed of professionals who have gained many years of experience in the field of the ball valves,it also has an excellent staff of engineers and technicians.

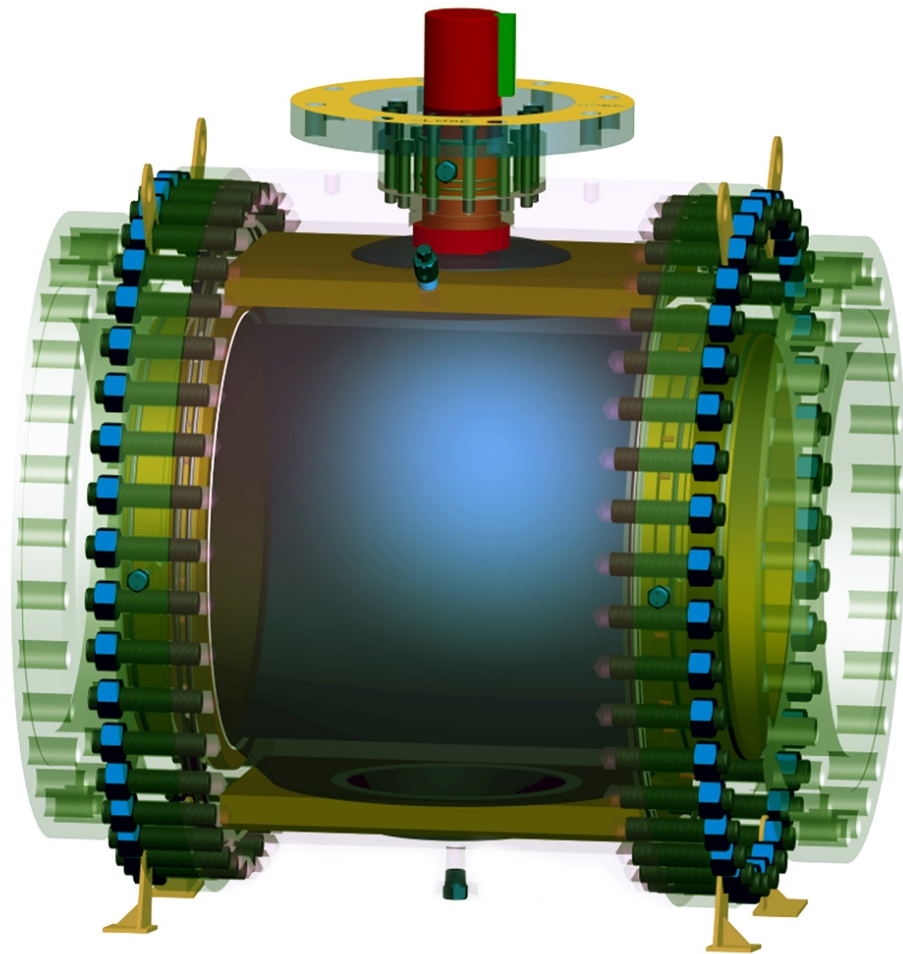
The company covers an area of 7000 square meters workshop,and employs the equipments of modern CNC machines and machining centers.By utilizing state-of-the-art technologies to design and manufacture,the company aims at providing the optimum process solutions to the customer and producing value added to them through the life cycles of the product.

The company's S series forged ball valves range from size 2" to 48" ;class 150LB~2500LB with the materials of A105,LF2,F6a,F304,F316,F51 etc.

The company is certified to API6D, ISO9001:2000,PED97/23/EC and API 607 etc.

S Series Trunnion Ball Valve

The S Series Three-Piece, Trunnion Ball Valve 2"-48" ANSI Class 150, 300, 600, 900, 1500 & 2500 In Full and Reduced Port

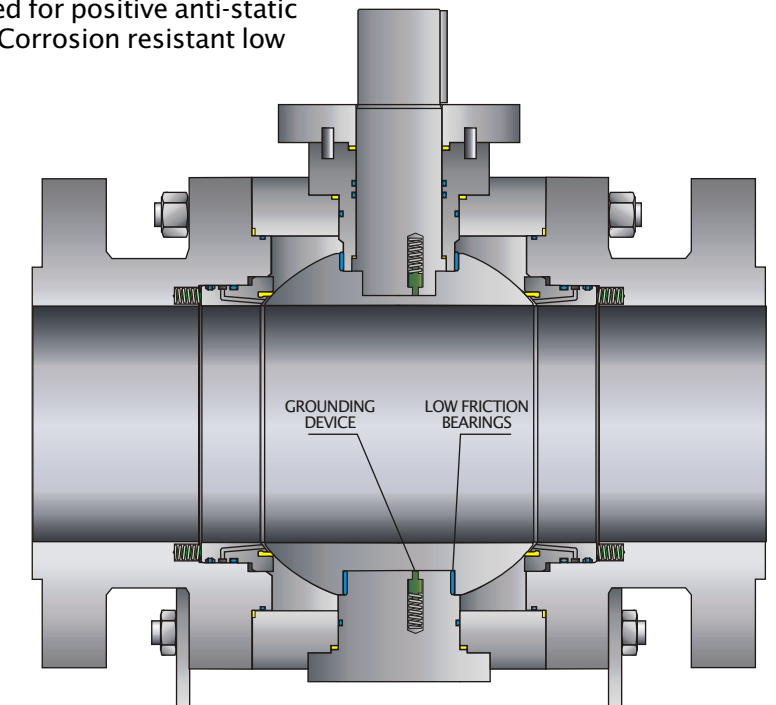


Main parts

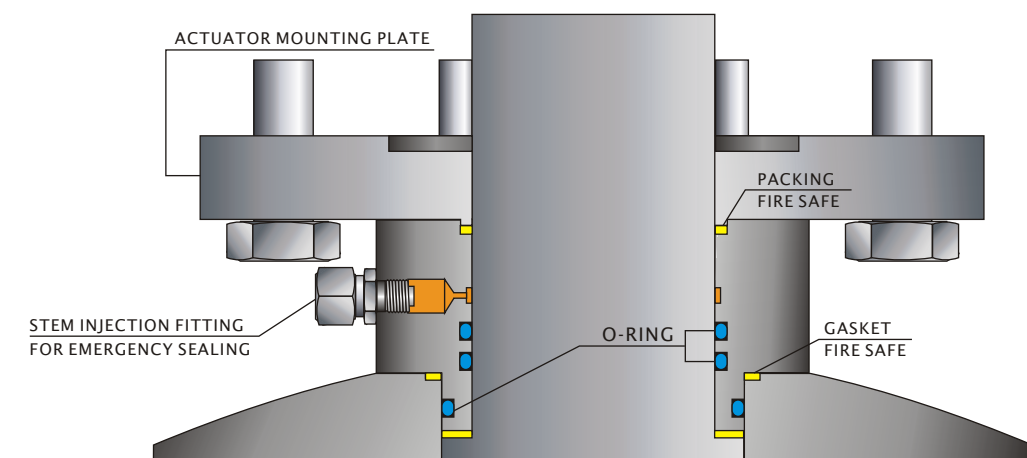
Part name	Material
Body/Closure	A105, LF2, F316, F316L, F304, F304L, F51
Ball/Stem	F316, F316L, F304, F304L, F6a, 17-4PH CS+1mil ENP CS+3mil ENP
Seat	NYLON, DEVLON, PEEK

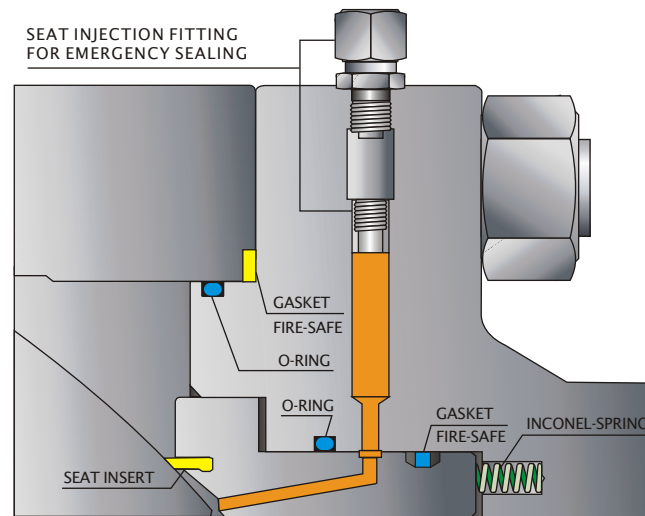
S Series Trunnion Ball Valve Main Features

- > Body is made of forgings, the individual parts are bolted together.
- > Double block and bleed feature means that it's possible to bleed or block the cavity in fully closed or opened position.
- > A large trunnion or trunnion support design ensures central positioning under the highest working pressure. Trunnion mounted ball permits ease of operation.
- > Grounding devices are supplied for positive anti-static between ball/stem and body. Corrosion resistant low friction bearings are supplied.

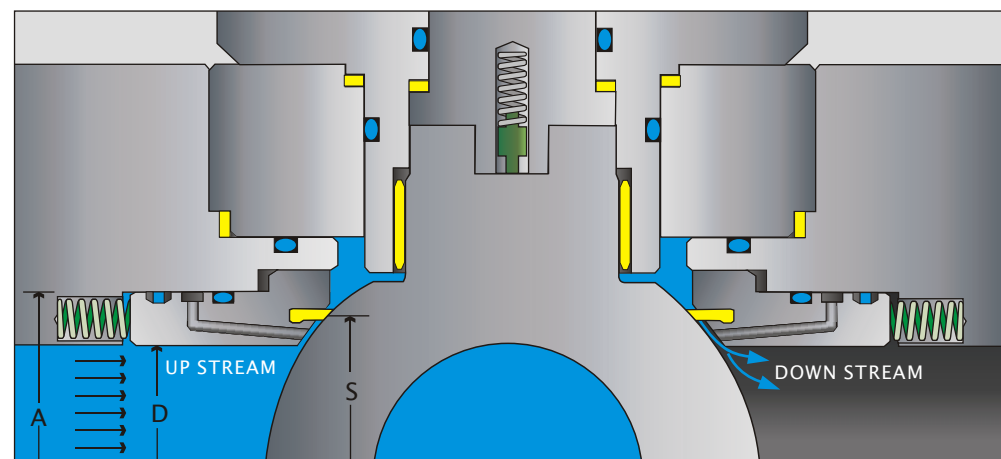


- > Actuator mounting plate are machined and drilled ready for mounting actuator.
- > Two set of O-ring plus fire safe packing on the stem efficiently prevent leakage.





- >Inconel spring force the seat with Nylon/DEVLON Insert toward ball, creating seal on both up stream and down stream of valve.
- >Sealant injection fittings for emergency stem or seat sealing are supplied.
- >Seat inserts are contained within a one-piece metal seat ring. With no or very low line pressure, sealing between the seats and ball is achieved by seat springs. With higher line pressure, the line pressure, in conjunction with the spring load, forces the upstream seat ring toward the ball, which results in tighter sealing.



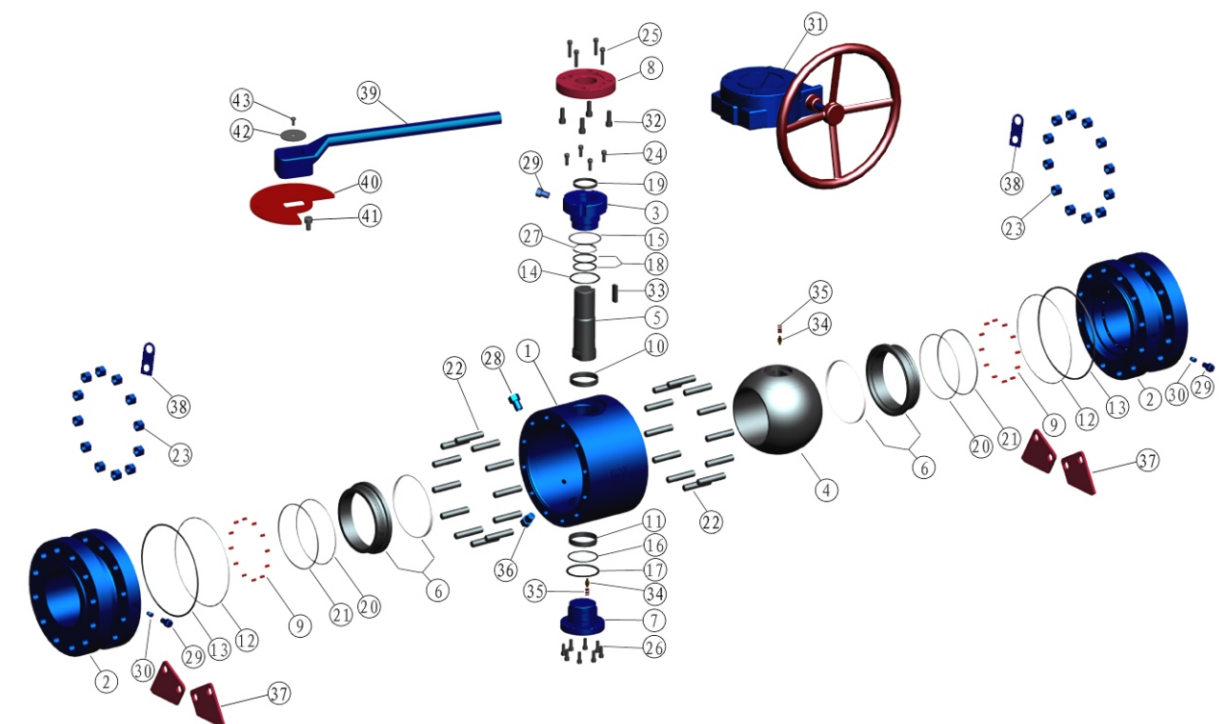
$$(A^2 - D^2) > (S^2 - D^2)$$

- >Self relieving seat is designed to prevent excessive pressure buildup within the valve by automatically relieving pressure when body cavity pressure exceeds the spring load on the seats.

- >Fire-safe design and tested to API 607.

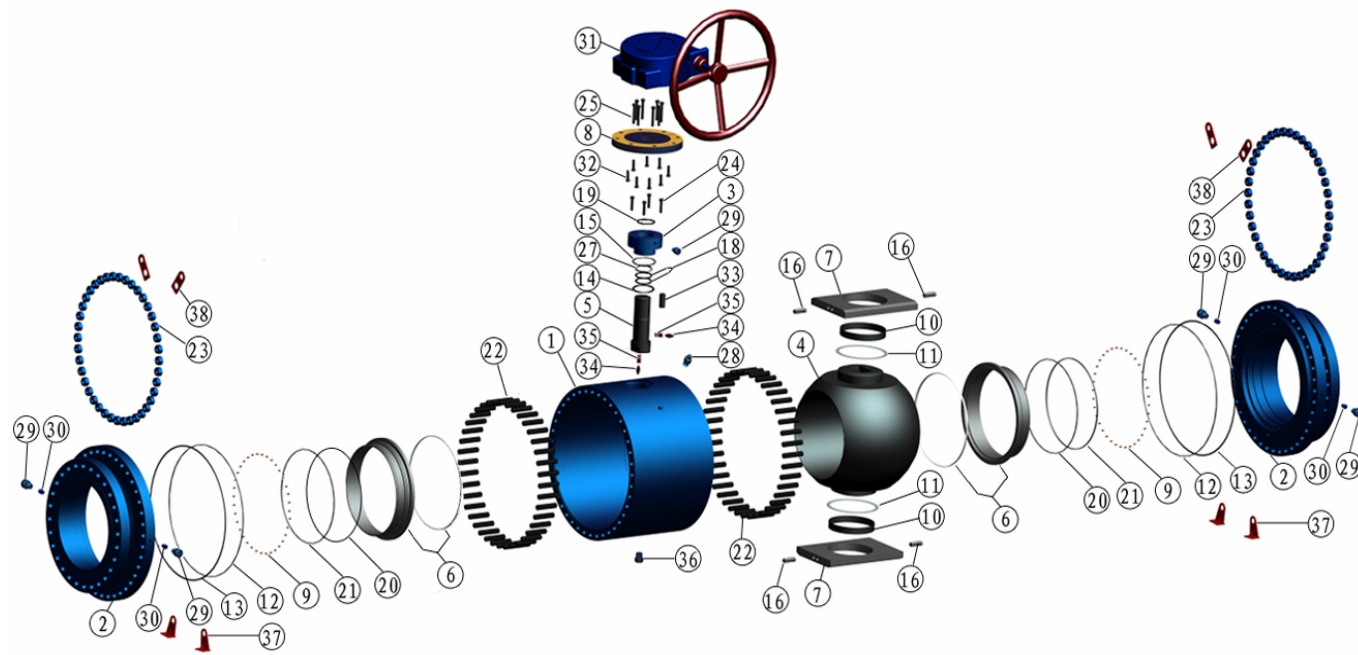


S Series 2"FP-12"FP Class 150,300, and 600 2"FP-4"FP Class 900,1500, and 2500

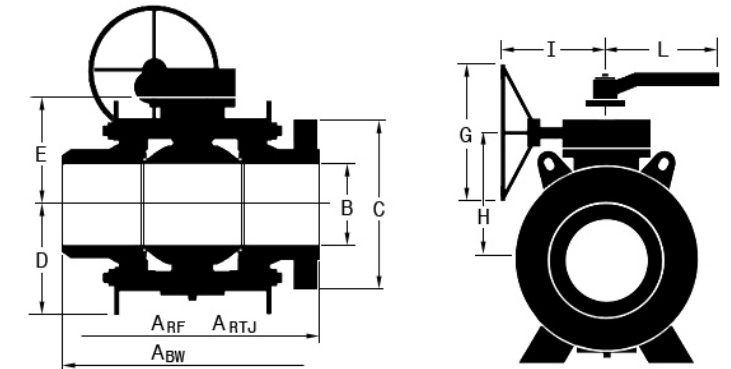
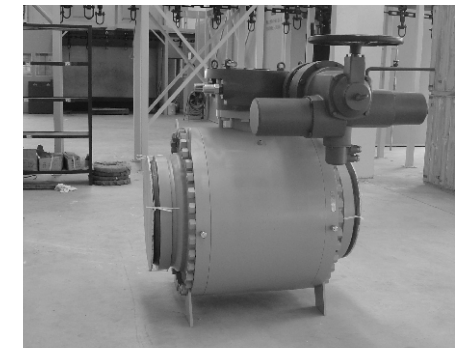


No	Description	No	Description	No	Description	No	Description	No	Description	No	Description
1	Body	9	Seat Spring	17	Trunnion Sub-Seal	25	Top Cover Screw	33	Stem Key	41	Stop Plate Screw
2	Closure	10	Stem Bearing	18	Stem Seal	26	Trunnion Screw	34	Grounding Plunge	42	Retainer
3	Bonnet	11	Trunnion Bearing	19	Stem Sub-Seal	27	Thrust Bearing-Stem	35	Grounding Plunge Spring	43	Handle Screw
4	Ball	12	Closure Seal	20	Seat Seal	28	Bleed Valve	36	Drain Plug		
5	Stem	13	Closure Sub-Seal	21	Seat Sub-Seal	29	Injection Fitting	37	Support Foot		
6	Seat Ring Sub Assembly	14	Bonnet Seal	22	Closure Studs	30	Check Valve	38	Lifting lug		
7	Trunnion	15	Bonnet Sub-Seal	23	Closure Nuts	31	Gear	39	Handle		
8	Top Cover	16	Trunnion Seal	24	Bonnet Screw	32	Gear Screw	40	Stop Plate		

S Series 14"FP-48"FP Class 150,300, and 600 6"FP-24"FP Class 900,1500, and 2500



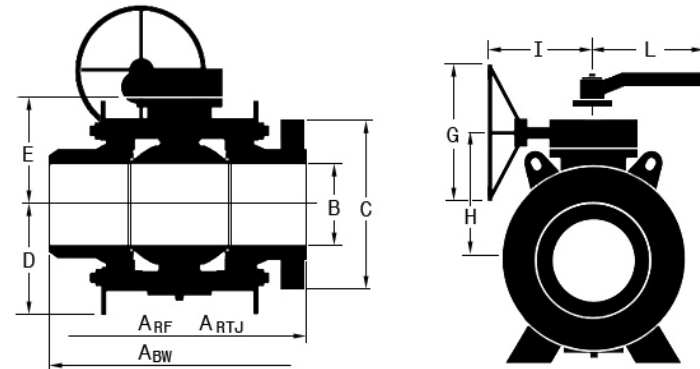
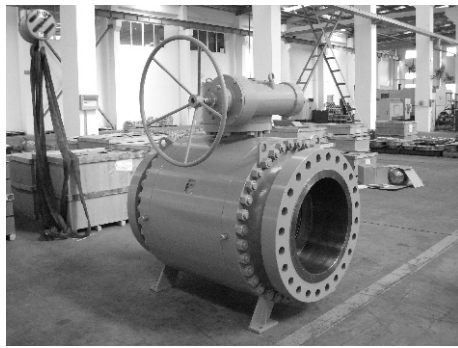
No	Description	No	Description	No	Description	No	Description	No	Description
1	Body	9	Seat Spring	18	Stem Seal	27	Thrust Bearing-Stem	35	Grounding Plunge Spring
2	Closure	10	Trunnion Bearing	19	Stem Sub-Seal	28	Bleed Valve	36	Drain Plug
3	Bonnet	11	Thrust Bearing-Ball	20	Seat Seal	29	Injection Fitting	37	Support Foot
4	Ball	12	Closure Seal	21	Seat Sub-Seal	30	Check Valve	38	Lifting lug
5	Stem	13	Closure Sub-Seal	22	Closure Studs	31	Gear		
6	Seat Ring Sub Assembly	14	Bonnet Seal	23	Closure Nuts	32	Gear Screw		
7	Trunnion Support	15	Bonnet Sub-Seal	24	Bonnet Screw	33	Stem Key		
8	Top Cover	16	Trunnion Alignment Pin	25	Top Cover Screw	34	Grounding Plunge		



S Series 2"-36" Class 150

Size (inch)	ARF	ARTJ	ABW	B	C	D	E	G	H	I	L	Weight(Kg)	
	mm											FL	BW
2	178	191	216	51X51	152	112	108	-	-	-	220	20	17
3X2	203	216	283	76X51	191	112	108	-	-	-	220	24	20
3	203	216	283	76X76	191	136	153	-	-	-	380	37	34
4X3	229	241	305	102X76	229	136	153	-	-	-	380	44	40
4	229	241	305	102X102	229	151	190	200	227	230	450	60	55
6X4	394	406	457	152X102	279	151	190	200	227	230	450	80	75
6	394	406	457	152X152	279	183	230	400	269	327		165	155
8X6	457	470	521	203X152	343	183	230	400	269	327		184	173
8	457	470	521	203X203	343	261	269	400	308	327		330	310
10X8	533	546	559	254X203	406	261	269	400	308	327		360	340
10	533	546	559	254X254	406	325	308	500	372	360		554	527
12X10	610	622	635	305X254	483	325	308	500	372	360		625	585
12	610	622	635	305X305	483	375	355	600	419	418		803	748
14X12	686	698	762	337X305	535	375	355	600	419	418		870	820
14	686	698	762	337X337	535	382	383	700	451	575		950	900
16X14	762	775	838	387X337	595	382	383	700	451	575		1010	960
16	762	775	838	387X387	595	400	428	700	496	575		1385	1320
18X16	864	876	914	438X387	635	400	428	700	496	575		1456	1390
18	864	876	914	438X438	635	486	481	700	560	575		1900	1800
20X18	914	927	991	489X438	700	486	481	700	560	575		1965	1865
20	914	927	991	489X489	700	500	517	700	596	575		2265	2160
24X20	1067	1079	1143	591X489	815	500	517	700	596	575		2420	2330
24	1067	1079	1143	591X591	815	579	595	700	682	579		3700	3590
30X24	1295	-	1397	737X591	984	579	595	700	682	579		4200	4070
30	1295	-	1397	737X737	984	710	751	700	901	670		5900	5790
36X30	1524	-	1727	876x737	1168	710	751	700	901	670		6800	6700
36	1524	-	1727	876x737	1168	810	864	700	1014	670		9400	9300

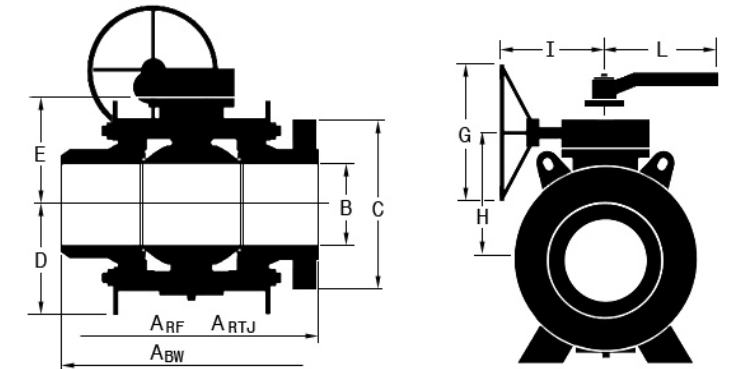
Notes: Dimension "D" includes trunnion screws, drain plug and support brackets. Large sizes available upon request.



S Series 2"-36" Class 300

Size (inch)	ARF	ARTJ	ABW	B	C	D	E	G	H	I	L	Weight(Kg)	
	mm											FL	BW
2	216	232	216	51X51	165	112	108	-	-	-	220	25	20
3X2	283	298	283	76X51	210	112	108	-	-	-	220	34	25
3	283	298	283	76X76	210	136	153	-	-	-	380	46	38
4X3	305	321	305	102X76	254	136	153	-	-	-	380	56	45
4	305	321	305	102X102	254	151	190	200	227	230	450	88	75
6X4	403	419	457	152X102	318	151	190	200	227	230	450	116	85
6	403	419	457	152X152	318	183	230	400	269	327		184	160
8X6	502	517	521	203X152	381	183	230	400	269	327		220	190
8	502	517	521	203X203	381	290	272	500	327	360		368	320
10X8	568	584	559	254X203	445	290	272	500	327	360		447	395
10	568	584	559	254X254	445	340	323	500	387	360		590	510
12X10	648	664	635	305X254	520	340	323	500	387	360		656	575
12	648	664	635	305X305	520	404	363	600	427	418		876	805
14X12	762	778	762	337X305	585	404	363	600	427	418		977	890
14	762	778	762	337X337	585	376	388	700	456	575		1170	1060
16X14	838	854	838	387X337	650	376	388	700	456	575		1324	1130
16	838	854	838	387X387	650	416	431	700	499	575		1496	1230
18X16	914	930	914	438X387	710	416	431	700	499	575		1585	1350
18	914	930	914	438X438	710	487	490	700	569	575		2230	1960
20X18	991	1010	991	489X438	775	487	490	700	569	575		2360	2080
20	991	1010	991	489X489	775	466	515	700	602	579		2670	2370
24X20	1143	1165	1143	591X489	915	466	515	700	602	579		3250	2880
24	1143	1165	1143	591X591	915	596	603	700	721	670		4300	3800
30X24	1397	1422	1397	737X591	1092	596	603	700	721	670		6200	5500
30	1397	1422	1397	737X737	1092	715	756	700	906	670		6700	5960
36X30	1727	1756	1727	876X737	1270	715	756	700	906	670		7900	7100
36	1727	1756	1727	876X737	1270	815	869	700	1019	690		9800	8900

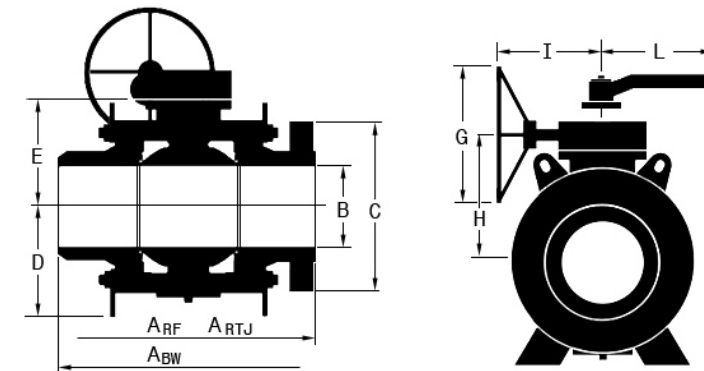
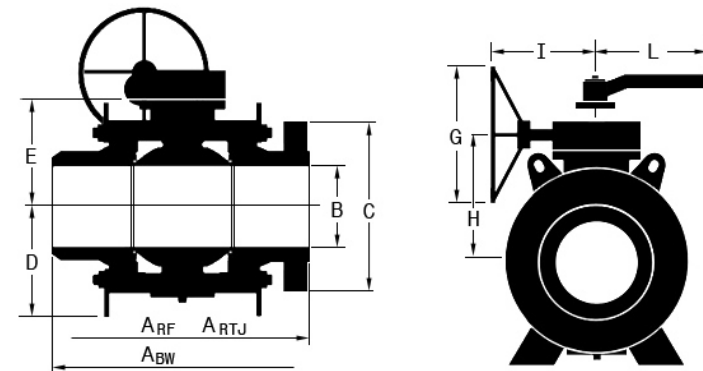
Notes: Dimension "D" includes trunnion screws, drain plug and support brackets. Large sizes available upon request.



S Series 2"-36" Class 600

Size (inch)	ARF	ARTJ	ABW	B	C	D	E	G	H	I	L	Weight(Kg)	
	mm											FL	BW
2	292	295	292	51X51	165	98	155	-	-	-	575	38	30
3X2	356	359	356	76X51	210	98	155	-	-	-	575	49	35
3	356	359	356	76X76	210	123	166	200	203	230	700	76	65
4X3	432	435	432	102X76	273	123	166	200	203	230	700	100	80
4	432	435	432	102X102	273	149	197	400	236	327	850	130	105
6X4	559	562	559	152X102	356	149	197	400	236	327	850	178	130
6	559	562	559	152X152	356	183	230	400	269	327		267	210
8X6	660	664	660	203X152	419	183	230	400	269	327		328	270
8	660	664	660	203X203	419	284	274	600	326	377		474	410
10X8	787	791	787	254X203	510	284	274	600	326	377		580	490
10	787	791	787	254X254	510	360	329	600	393	418		810	660
12X10	838	841	838	305X254	560	360	329	600	393	418		884	740
12	838	841	838	305X305	560	362	378	700	446	545		1267	1050
14X12	889	892	889	337X305	605	362	378	700	446	545		1427	1240
14	889	892	889	337X337	605	394	391	700	470	575		1370	1190
16X14	991	994	991	387X337	685	394	391	700	470	575		1535	1340
16	991	994	991	387X387	685	395	435	700	514	575		1918	1640
18X16	1092	1095	1092	438X387	745	395	435	700	514	575		2120	1820
18	1092	1095	1092	438X438	745	499	496	700	583	579		2820	2460
20X18	1194	1200	1194	489X438	815	499	496	700	583	579		3035	2660
20	1194	1200	1194	489X489	815	544	541	700	659	670		3750	3300
24X20	1397	1406	1397	591X489	940	544	541	700	659	670		4270	3940
24	1397	1406	1397	591X591	940	596	604	700	754	690		6250	5760
30X24	1651	1664	1651	737X591	1130	596	604	700	754	690		7600	7100
30	1651	1664	1651	737X737	1130	744	766	700	916	690		8500	7700
36X30	2083	2099	2083	876X737	1314	744	766	700	916	690		10300	9500
36	2083	2099	2083	876X737	1314	850	889	700	1039	830		12900	11500

Notes: Dimension "D" includes trunnion screws, drain plug and support brackets. Large sizes available upon request.



S Series 2"-24" Class 900

Size (inch)	ARF	ARTJ	ABW	B	C	D	E	G	H	I	L	Weight(Kg)	
	mm											FL	BW
2	368	371	368	51X51	216	109	149	200	186	230	575	52	34
3X2	381	384	381	76X51	241	109	149	200	186	230	575	60	50
3	381	384	381	76X76	241	139	179	200	216	230	700	98	70
4X3	457	460	457	102X76	292	139	179	200	216	230	700	120	90
4	457	460	457	102X102	292	163	216	400	255	327	850	175	125
6X4	610	613	610	152X102	381	163	216	400	255	327	850	245	195
6	610	613	610	152X152	381	180	255	600	307	377		355	260
8X6	737	740	737	203X152	470	180	255	600	307	377		440	300
8	737	740	737	203X203	470	307	296	700	360	545		630	490
10X8	838	841	838	254X203	545	307	296	700	360	545		740	600
10	838	841	838	254X254	545	356	342	700	410	575		970	750
12X10	965	968	965	305X254	610	356	342	700	410	575		1125	900
12	965	968	965	305X305	610	380	410	700	489	575		1300	1000
14X12	1029	1038	1029	324X305	641	380	410	700	489	575		1490	1170
14	1029	1038	1029	324X324	641	408	395	700	474	575		1650	1300
16X14	1130	1140	1130	375X324	705	408	395	700	474	575		1830	1450
16	1130	1140	1130	375X375	705	465	453	700	540	579		2300	1830
18X16	1219	1232	1219	425X375	787	465	453	700	540	579		2580	2040
18	1219	1232	1219	425X425	787	510	513	700	631	670		3900	3120
20X18	1321	1333	1321	473X425	855	510	513	700	631	670		4200	3360
20	1321	1333	1321	473X473	855	560	551	700	660	670		5100	4080
24X20	1549	1568	1549	572X473	1041	560	551	700	660	670		6100	4300
24	1549	1568	1549	572X572	1041	620	630	700	780	690		7800	5950

Notes: Dimension "D" includes trunnion screws, drain plug and support brackets. Large sizes available upon request.

S Series 2"-16" Class 1500

Size (inch)	ARF	ARTJ	ABW	B	C	D	E	G	H	I	L	Weight(Kg)	
	mm											FL	BW
2	368	372	368	51X51	216	129	178	200	215	230	575	77	50
3X2	470	473	470	76X51	267	129	178	200	215	230	575	100	90
3	470	473	470	76X76	267	175	219	400	258	327		175	135
4X3	546	549	546	102X76	311	175	219	400	258	327		203	170
4	546	549	546	102X102	311	187	235	500	290	360		282	190
6X4	705	711	705	146X102	394	187	235	500	290	360		386	320
6	705	711	705	146X146	394	210	288	700	340	545		580	440
8X6	832	841	832	194X146	483	210	288	700	340	545		706	480
8	832	841	832	194X194	483	349	347	700	417	575		980	660
10X8	991	1000	991	241X194	584	349	347	700	417	575		1210	760
10	991	1000	991	241X241	584	374	397	700	476	575		1350	1000
12X10	1130	1146	1130	289X241	673	374	397	700	476	575		1950	1370
12	1130	1146	1130	289X289	673	400	480	700	559	575		2500	1600
14X12	1257	1276	1257	317X289	750	400	480	700	559	575		2800	2300
14	1257	1276	1257	317X317	750	420	480	700	598	670		3000	2450
16X14	1384	1406	1384	362X317	826	420	480	700	598	670		3200	2650
16	1384	1406	1384	362X362	826	560	503	700	621	670		3600	2900

Notes: Dimension "D" includes trunnion screws, drain plug and support brackets. Large sizes available upon request.

TOP MOUNTING DIMENSIONS AND STEM TORQUE

Dimension Unit:mm

Torque unit:Nm

H: No. of holes

I: Hole Diameter

Position of holes:
As per ISO 5211

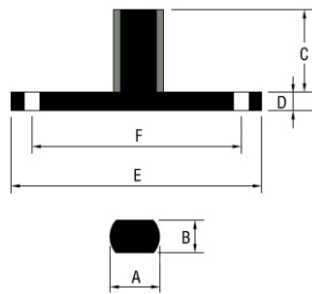


FIG.1 (2"~6", 8"CL150~300)

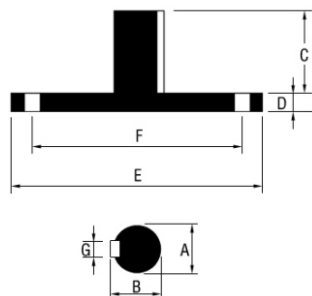


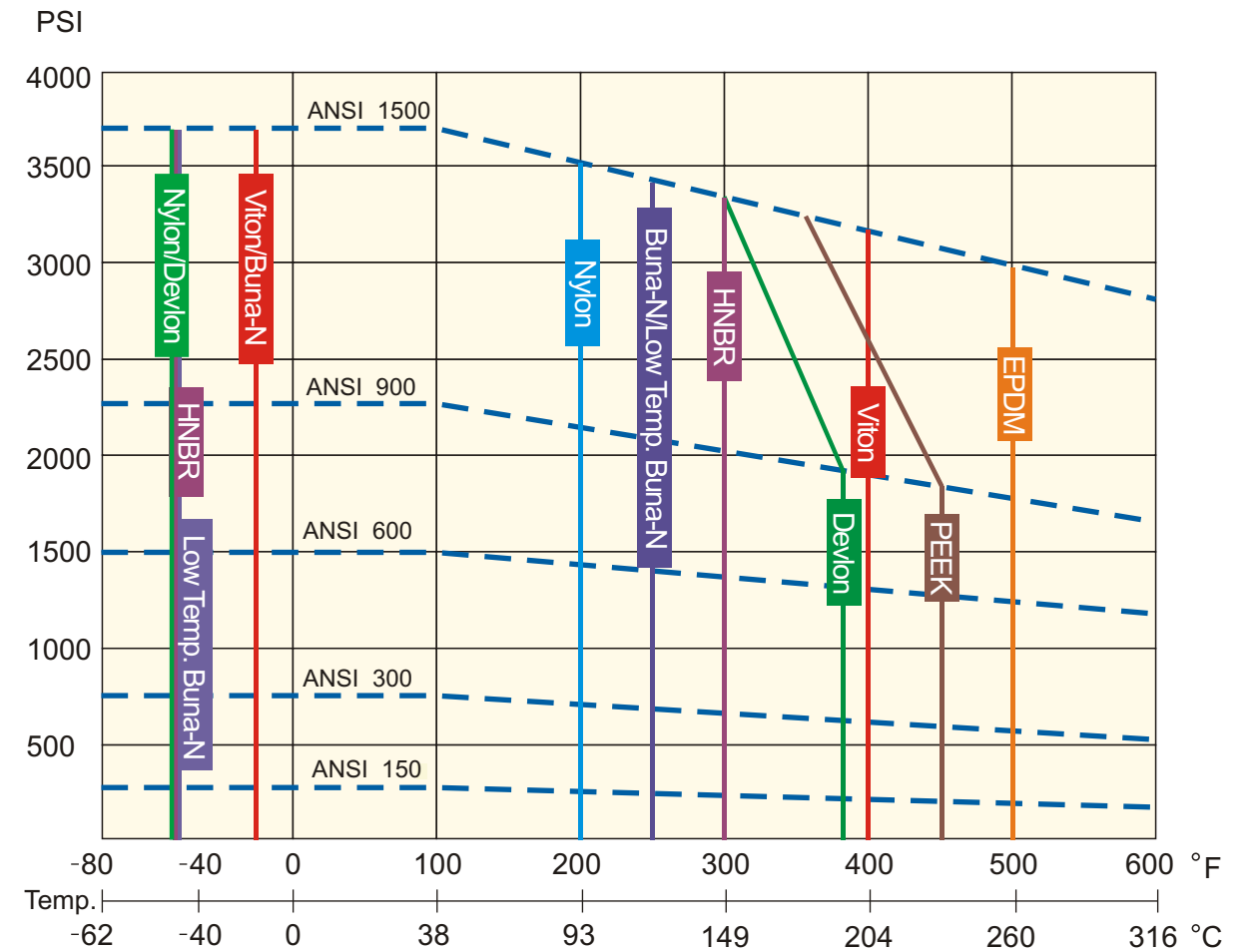
FIG.2 (8"CL600~1500, 10" and above)

*Denotes valve breakaway torque.

For powered actuators, an additional 25% minimum shall be added as safety factors.

Size	Class	A	B	C	D	E	F	G	H	I	*Torque
2	150	22.1	14.1	25	10	104.8	-	-	-	-	60
	300	22.1	14.1	30	10	104.8	-	-	-	-	95
	600	22.1	14.1	40	18	150	125	-	4	13.5	150
	900	22.1	14.1	40	18	150	125	-	4	13.5	220
3	1500	31.3	19	40	24	150	125	-	4	13.5	420
	150	31.3	19	40	18	110	-	-	-	-	140
	300	31.3	19	40	18	110	-	-	-	-	220
	600	35	25.2	50	20	158	138	-	4	13.5	330
4	900	35	25.2	50	24	170	138	-	4	13.5	490
	1500	38	25.2	50	30	170	140	-	4	17	810
	150	31.3	19	50	20	145	125	-	4	13.5	220
	300	31.3	19	50	20	145	125	-	4	13.5	340
6	600	38	25.2	50	24	175	140	-	4	17	460
	900	38	25.2	50	30	175	140	-	4	17	830
	1500	45	31.6	50	30	210	165	-	4	20	1500
	150	50.5	31.6	50	30	175	140	-	4	17	380
8	300	50.5	31.6	50	30	175	140	-	4	17	610
	600	50.5	31.6	50	30	175	140	-	4	17	960
	900	50.5	31.6	50	30	210	165	-	4	20	1880
	1500	63.3	44.3	70	30	300	254	-	8	17	3250
10	150	50.5	31.6	70	30	210	165	-	4	20	640
	300	63.2	44.3	70	30	210	165	-	4	20	1180
	600	72.9	81	90	30	210	165	19	4	20	2000
	900	72.9	81	95	30	300	254	19	8	17	3600
12	1500	72.9	81	95	35	300	254	19	8	17	5500
	150	72.9	81	75	30	300	254	19	8	17	1200
	300	72.9	81	75	30	300	254	19	8	17	2120
	600	82.3	91.6	90	30	300	254	22	8	17	3580
14	900	82.3	91.6	95	30	300	254	22	8	17	5280
	1500	82.3	91.6	95	35	300	254	22	8	17	7560
	150	82.3	91.6	95	30	300	254	22	8	17	1660
	300	82.3	91.6	95	30	300	254	22	8	17	2490
16	600	101.4	112	105	30	300	254	25.4	8	17	5390
	900	101.4	112	105	35	350	298	25.4	8	20	7380
	1500	101.4	112	105	40	350	298	25.4	8	20	10700
	150	82.3	91.6	90	33	300	254	22	8	17	2750
18	300	82.3	91.6	90	33	300	254	22	8	17	3580
	600	101.4	112	105	33	350	298	25.4	8	20	6520
	900	101.4	112	105	35	350	298	25.4	8	20	9850
	1500	110	120.2	115	40	350	298	25.4	8	20	16380
20	150	82.3	91.6	95	33	300	254	22	8	17	3650
	300	82.3	91.6	95	33	300	254	22	8	17	5600
	600	101.4	112	105	33	350	298	25.4	8	20	8685
	900	110	120.2	115	35	350	298	25.4	8	20	12750
24	1500	110	120.2	115	40	350	298	25.4	8	20	19500
	150	101.4	112	100	33	350	298	25.4	8	20	4850
	300	101.4	112	100	33	350	298	25.4	8	20	7840
	600	110	120.2	115	35	350	298	25.4	8	20	13350
30	900	110	120.2	115	35	350	298	25.4	8	20	19980
	150	101.4	112	115	33	350	298	25.4	8	20	5460
	300	110	120.2	115	35	350	298	25.4	8	20	9570
	600	110	120.2	115	35	350	298	25.4	8	20	18500
36	900	120	133	115	40	415	356	25.4	8	34	26320
	150	110	120.2	115	35	350	298	25.4	8	20	10970
	300	110	120.2	115	35	350	298	25.4	8	20	17580
	600	120	133	115	50	475	406	31.5	8	38	30880
42	900	150	166.4	200	50	475	406	38	8	40	42370
	150	110	120.2	150	35	350	298	25.4	8	20	18580
	300	120	133	150	40	475	406	31.5	8	38	27460
	600	150	166.4	200	50	475	406	38	8	40	41830
48	150	120	133	150	40	415	356	25.4	8	34	22580
	300	120	133	200	50	475	406	31.5	8	38	34180
600	150	166.4	200	50	475	406	38	8	40	52270	

S Series Pressure Temperature Chart



Notes: Other materials available upon request.



S Series Specification for Flow Coefficient

Size	Flow Coefficients (Cv) Rating				
	CL.150	CL.300	CL.600	CL.900	CL.1500
2 × 2	500	460	400	330	330
3 × 2	180	195	180	187	187
3 × 3	1350	1150	1050	935	830
4 × 3	545	535	550	510	510
4 × 4	2500	2200	1850	1760	1660
6 × 4	790	765	745	740	740
6 × 6	5300	5290	4460	4405	4100
8 × 6	1945	1945	2220	2035	2030
8 × 8	10500	9600	8730	8475	8010
10 × 8	4050	4040	4065	4060	4050
10 × 10	17500	16750	14250	14205	13310
12 × 10	6900	7100	7150	7135	7115
12 × 12	26300	25500	22550	21430	17070
14 × 12	13100	13200	14350	14290	14180
14 × 14	31850	30050	28400	26800	24275
16 × 14	14600	14580	14350	14315	14245
16 × 16	43300	41700	38150	36700	33215
18 × 16	19750	19800	20350	19750	
18 × 18	57300	55370	50950	48700	
20 × 18	27750	28050	29500	29430	
20 × 20	74500	72300	65600	62500	
24 × 20	44700	44650	48900	48710	
24 × 24	112300	109150	98150	94050	
30 × 24	76000	75900	73850		
30 × 30	179300	171200	158900		
36 × 30	123000	121550	118300		
36 × 36	258300	243050	226300		

Material Specification

Description	Materials
Body, Closure, Bonnet	1. Carbon steel: ASTM A105 2. Low Temp. Carbon steel: ASTM A350-LF2 3. Stainless steel: ASTM A182-F316 ASTMA182-F304 ASTMA182-F316L ASTMA182-F304L ASTMA182-F51 4. Monel
Ball, Stem, Seat ring, Trunnion	1. Carbon steel with 1 mil ENP 2. Carbon steel with 3 mil ENP 3. Low Temp. Carbon steel with 3 mil ENP 4. Stainless steel: ASTM A182-F316 ASTMA182-F304 ASTMA182-F316L ASTMA182-F304L ASTMA182-F51 ASTMA182-F6a-CL2 5. Monel 6. 17-4PH
Bolting	1. A193-B7M/A194-2HM 4. A193-B8/A194-8 2. A193-B7/A194-2H 5. A193-B8M/A194-8M 3. A320-L7/A194-4 6. A320-L7M/A194-7M
Stem Bearing, Trunnion Bearing	DU
Closure Seal, Stem seal, Bonnet Seal Seat Seal, Trunnion Seal	1. Buna-N 3. Low Temp. Buna-N 5. Viton AED 2. Viton 4. HNBR 6. EPDM
Closure Sub-Seal, Bonnet Sub-Seal, Stem Sub-Seal, Trunnion Sub-Seal	1. 316SS Spiral Wound Graphite 2. Graphite
Seat Insert	1. Devlon 2. Nylon 3. PEEK
Thrust Bearing	PTFE
Seat Spring	Inconel X-750
Injection Fitting	1. Carbon steel 2. Stainless steel
Bleed Valve, Drain Plug	1. Carbon steel 2. Stainless steel
Key, Pin	1. Carbon steel 2. Stainless steel
Gear Operator	Cast Steel case, Carbon Steel worm & segment gear

Specifications for Seat Materials

Properties	Devlon	Nylon	PEEK
Type	Cast or Machined	Molded, Cast or Machined	Molded or Machined
Specific gravity	1.14	1.02 ± 0.02	1.30-1.34
Hardness (ASTM D2240)	D79 ± 1	D75 ± 5	D85 ± 5
Tensile strength(psi)	11592	8000(min)	11000(min)
Ultimate elongation (%)	5.37	250min(≤6") 16min(> 6")	30(min)
Temperature Limitations (°F)	-50 to 392	-50 to 200	-100 to 450
Colour Code	Yellow	Natural	Various

Specifications for Seal Materials

Properties	Viton	Buna-N	Low temp. Buna-N	EPDM	HNBR
Type	Molded	Molded	Molded	Molded	Molded
Specific gravity	1.85 ± 0.02	1.31	1.31 ± 0.03	--	1.33 ± 0.03
Hardness (ASTM D2240)	D75 ± 5	D90 ± 5	D90 ± 5	D90 ± 5	D75 ± 5
Tensile strength(psi)	--	--	1450	1960	2450(min)
Ultimate elongation(%)	--	--	75(min)	101	225(min)
Temperature Limitations (°F)	-20 to 400	-15 to 250	-45 to 250	-60 to 500	-50 to 300
Color Code	Orange	No Color Code	Yellow	Fluorescent Orange	Green

Specifications for Gasket

Type	Use	Temp. Range(°F)	PH
Spiral Wound 316SS+Graphite	100% Fire-safe	-328 to 500	0-14
Solid Graphite	100% Fire-safe	-328 to 500	0-14

How to Order

